

••• Made in Germany



Implant System Hexagon

› the root of dental success

radix›
Implants & Biomaterials

The new radix Implant System Hexagon

Benefit from the latest in dental implant research and practice:

We combine the best of the world’s leading implant systems. You will receive excellent quality with easy handling at exceptionally attractive prices. The radix Hexagon Implant System covers a wide range of applications and allows you to make high-quality implants accessible to a larger clientele of patients. Selection and application are optimally matched to the requirements in dental practice.

We develop and manufacture our implants from first-class materials exclusively in Germany in order to meet the highest quality standards. Our value creation chain combines innovative design with state-of-the-art testing and manufacturing processes.

radix stands for transparency, good advice and quality. Made in Germany.

radix – German quality in his best shape

- ▶ The latest in dental implant research and practice

▶ Bone Level and Tissue Level Implants Made in Germany

▶ Bone Level and Tissue Level, One platform

▶ Perfect primary and secondary stability

▶ Perfect for immediate loading

▶ Dimensional stability of titanium components through shot blasting

▶ Hexagon socket for safe and flexible positioning of the abutments in the implant

▶ Stable screw-cone connection for even load distribution and anti-rotation safety
- ▶ Also suitable for single-stage surgical procedures

▶ Self-tapping screw implant with compression thread and micro thread in the upper region for optimal protection of the crestal jawbone

▶ Initial high bone-to-implant contact for rapid osseointegration due to special surface treatment

▶ Ideal restorative flexibility and long-term mechanical stability

▶ Homogeneous surface structure

▶ Determined roughness: 1.5 +/- 0.5 µm

▶ Clean by Design: no corundum impacts on the surface

▶ No residues from blasting agents

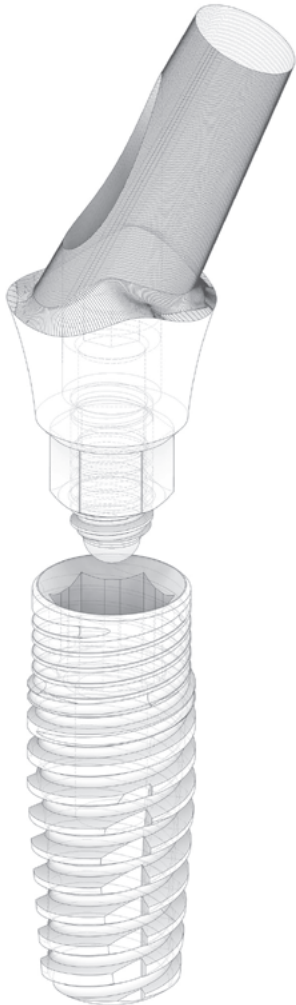
radix – Bone Level AI-Implant



▶ Usability in complex aesthetic cases is well predictable.

Implant (AI: Implant for all indications) without supracrestal elements and which is completely sunk into bone level. For one- and two-stage implant placement. If hard and/or soft tissue have to be augmented. Preferred in the anterior and premolar region – e.g. with a high smile line and thin gingiva.

- Abutments 0°, 15° und 25°
- 3 prosthetic heights
- Connection via internal hex
- Platform switching
- 4-fold micro-thread
- Cylindrical area
- Compression thread for bone condensation
- Surface blasted and etched
- Conical area
- 3 notches
- Rounded tip



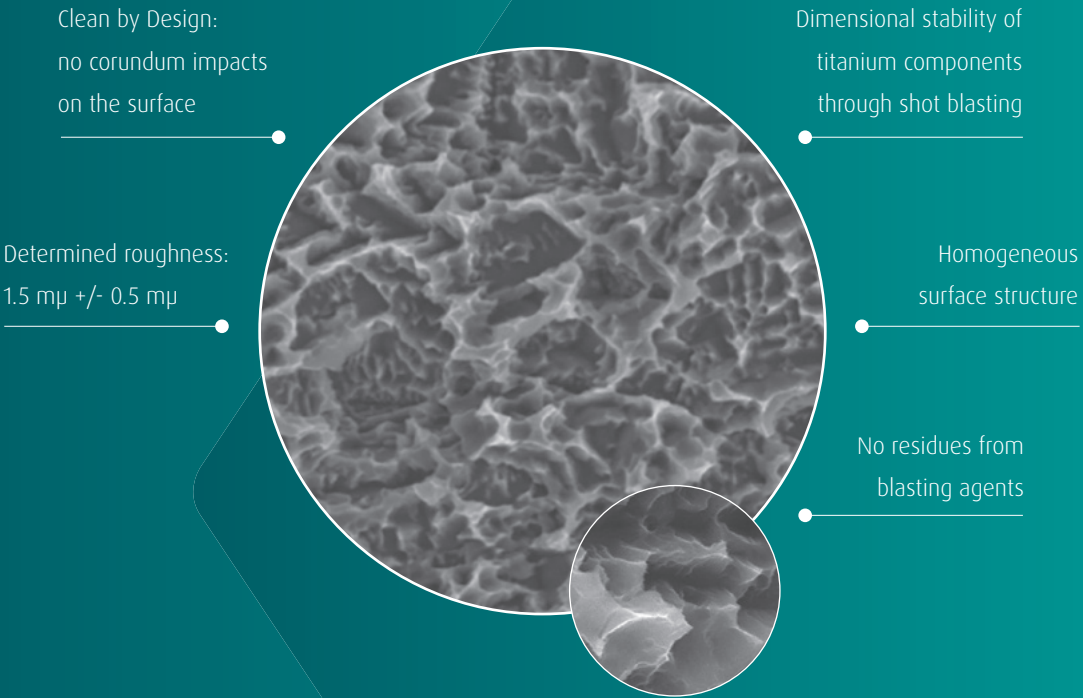
	Ø 3.3 mm	Ø 3.75 mm	Ø 4.2 mm	Ø 5.0 mm
Length				
6.0 mm	–	R-BL AI-05	R-BL AI-10	R-BL AI-15
8.0 mm	R-BL AI-01	R-BL AI-06	R-BL AI-11	R-BL AI-16
10.0 mm	R-BL AI-02	R-BL AI-07	R-BL AI-12	R-BL AI-17
11.5 mm	R-BL AI-03	R-BL AI-08	R-BL AI-13	R-BL AI-18
13.0 mm	R-BL AI-04	R-BL AI-09	R-BL AI-14	R-BL AI-19
	Article Number			

Safety made to measure

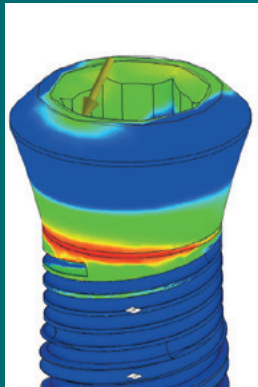
●●● Made in Germany

Grade 4 titanium surfaces

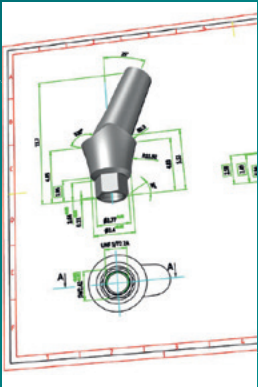
► The radix implants are first gently conditioned with zirconium oxide particles. Then they are structured through acid treatment. The implants are treated according to validated processes. Grade 4 titanium is an inert biocompatible material that is roughened on the surface to support osseointegration of the implant.



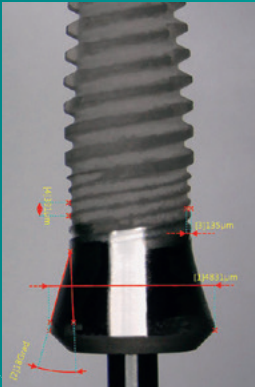
Quality in detail – Made in Germany



► Finite-Element-Calculation



► Three-dimensional construction



► Measurement

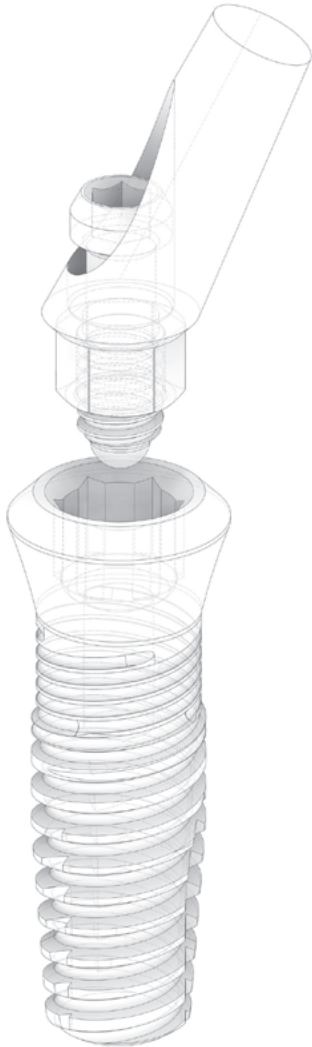
radix – Tissue Level Implant



► Well suited for hybrid prosthetics.

With implant shoulder that extends a few millimetres above bone level and contributes directly to soft tissue formation. Also suitable for single-stage implant placement. Especially in the posterior region to bridge large vertical and horizontal dimensions.

- Abutments 0°, 15° und 25°
- Connection via internal hex
- 4-fold micro-thread
- Cylindrical area
- Compression thread for bone condensation
- Surface blasted and etched
- Conical area
- 3 notches
- Rounded tip



	Ø 3.3 mm	Ø 3.75 mm	Ø 4.2 mm	Ø 5.0 mm
Length				
6.0 mm	–	–	–	–
8.0 mm	R-TL01	R-TL05	R-TL09	–
10.0 mm	R-TL02	R-TL06	R-TL10	–
11.5 mm	R-TL03	R-TL07	R-TL11	–
13.0 mm	R-TL04	R-TL08	R-TL12	–
Article Number				

The new radix Implants – Bendable One Piece & Conical

- › Benefit from the latest in dental implant research and practice: We combine the best of the world’s leading implant systems. You will receive excellent quality with easy handling at exceptionally attractive prices.
- › The radix Implant System covers a wide range of applications and allows you to make high-quality implants accessible to a larger clientele of patients.
- › Selection and application are optimally matched to the requirements in dental practice.

Bendable One Piece

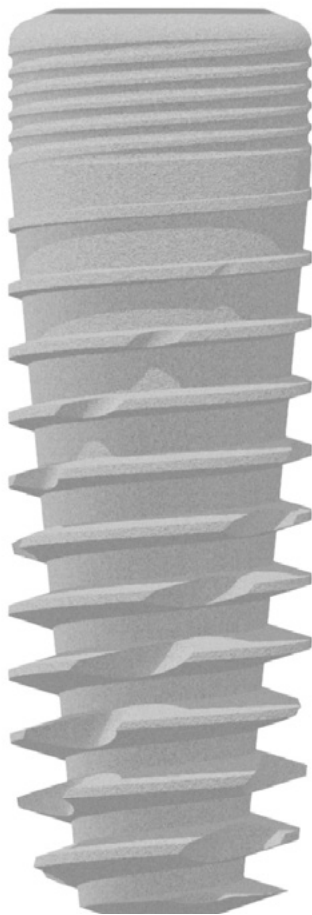
- High reduction grooves
- Cementable part
- Retention grooves
- Golden anodized for high esthetics
- Bendable neck
- Square for easy remove
- Micro threads
- Bone condensing
- High primary stability
- Self tapping
- For all types of bone
- For immediate loading
- Minimal drilling



	Ø 2.8 mm	Ø 3.3 mm	Ø 3.8 mm
Length			
8.0 mm	–	R-OP-05	R-OP-10
10.0 mm	R-OP-01	R-OP-06	R-OP-11
11.5 mm	R-OP-02	R-OP-07	R-OP-12
13.0 mm	R-OP-03	R-OP-08	R-OP-13
16.0 mm	R-OP-04	R-OP-09	R-OP-14
	Article Number		

Conical

- One abutment fits all implant sizes
- Platform switching,
- Rounded edge preserve crystal bone
- Microthreads
- Hybrid conical connection
- Internal hex
- Bone condensing
- Cylindrical thread shape
- High surface area
- For soft and hard bone
- High primary stability
- Cutting grooves
- Wide threads
- Round apix



	Ø 3.3 mm	Ø 3.8 mm	Ø 4.2 mm	Ø 5.0 mm
Length				
6.0 mm	–	R-CI-05	R-CI-10	R-CI-15
8.0 mm	R-CI-01	R-CI-06	R-CI-11	R-CI-16
10.0 mm	R-CI-02	R-CI-07	R-CI- 12	R-CI-17
11.5 mm	R-CI-03	R-CI-08	R-CI-13	R-CI-18
13.0 mm	R-CI-04	R-CI-09	R-CI- 14	R-CI-19
	Article Number			

- › Hybrid Connection for safe and flexible positioning of the abutments in the implant
- › Also suitable for single-stage surgical procedures

radix bovine is an inorganic mineral matrix made of cancellous bovine bone.

› The manufacturing based on different physical-chemical processes removes all organic components from the femur proximal extremity (femoral bovine head) guaranteeing high safety.

Due to the characteristics of its natural and inorganic structure, **radix bovine** may be compared to human bone. Its interconnected pore structure and special consistency, it promotes bone growth in the implant zone and undergoes a gradual physiological remodeling process through the osteoclasts and osteoblasts. **radix bovine** is an excellent alternative to autologous bone.



	Particle Size	Content
Ref.		
RXBHA01	0.25 -1.68 mm	0.5 g
RXBHA02	0.25 -1.68 mm	1.0 g
RXBHA03	0.25 -1.68 mm	2.0 g

Properties

- › Bone graft 100 % natural
- › Easy handling
- › Rapid bone regeneration
- › Excellent osteoconductivity
- › High wettability
- › Maximum efficacy and safety in bone regeneration

Indications

- › Reconstruction
- › Increase of alveolar ridges
- › Bone dehiscence
- › Filling of immediate implants
- › Sinus lift procedures
- › Preparing implant sites
- › Filling of bone defects

radix bovine Spongious bovine bone



Using radix bovine

radix bovine should be used in accordance with the general medical guidelines regarding handing in sterile conditions and pharmacological treatment of patients.

- › Exposing the defect using a full-thickness flap, depending on the basic surgical procedure, and completely eliminate the granulation tissue.
- › Before performing the granule graft on the patient, wet it with physiological saline solution, apyrogenic water or blood from the patient.
- › Apply the material to the defect, using sterile surgical instrument.
- › Do not apply excessive quantities of material to the defect.
- › Model gently in the site with the spatula.
- › The flap should cover the implanted material completely during the suturing process.
- › As a rule, in cases in which should be covered subperiostically with a collagen membrane.
- › Control of bacterial infection and adequate oral hygiene will promote effective periodontal treatment. For this reason, before the surgical procedure it is advisable to implement hygiene regarding care and maintenance of the affected area both before and after surgery.

Safety made to measure



› the root of dental success
●●● Made in Germany

radix Instrument Set

- › The result of decades of experience and development – Made in Germany
- › Optimum cutting performance | low vibration | excellent durability | outstanding precision
- › Validated cleaning in accordance with DIN EN ISO 17664
- › Depth markings: 6.0/8.0/10.0/11.5/13.0/16.0 mm
- › Drill depth stop with 4 lengths



The **radix** instrument set is delivered in a transportable storage box.



- › Easy cleaning, disinfection and sterilisation according to MDD
- › For all steam sterilisation processes under vacuum (121 °C and 134 °C)
- › For low temperature sterilisation with gas, H₂O₂ and H₂O₂ plasma

●●● Made in Germany



› the root of dental success

●●● Made in Germany

radix Implants & Biomaterials GmbH • Hirzenrott 2-4 • D-52076 Aachen • T: +49 (0)2408 95 888 91 • F: +49 (0)2408 95 888 92
E-mail: info@radix-implants.com • www.radix-implants.com • VAT ID No.: DE 306212526 • HRA 21818 • Register Court Aachen
SWIFT (BIC) AACSD33XXX • IBAN DE84 3905 0000 1072 6586 34